



# Utah Trust Lands

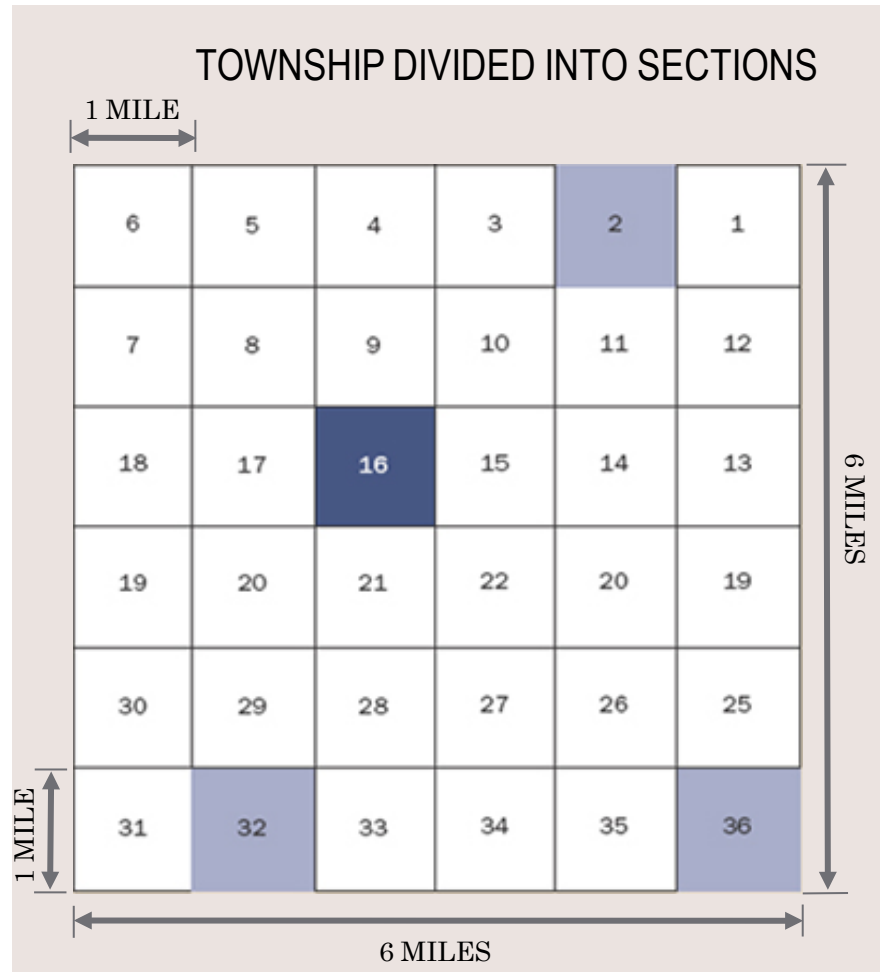
An Important Source

**EDUCATION FUNDING**

# Supporting Education Funding through School Trust Lands

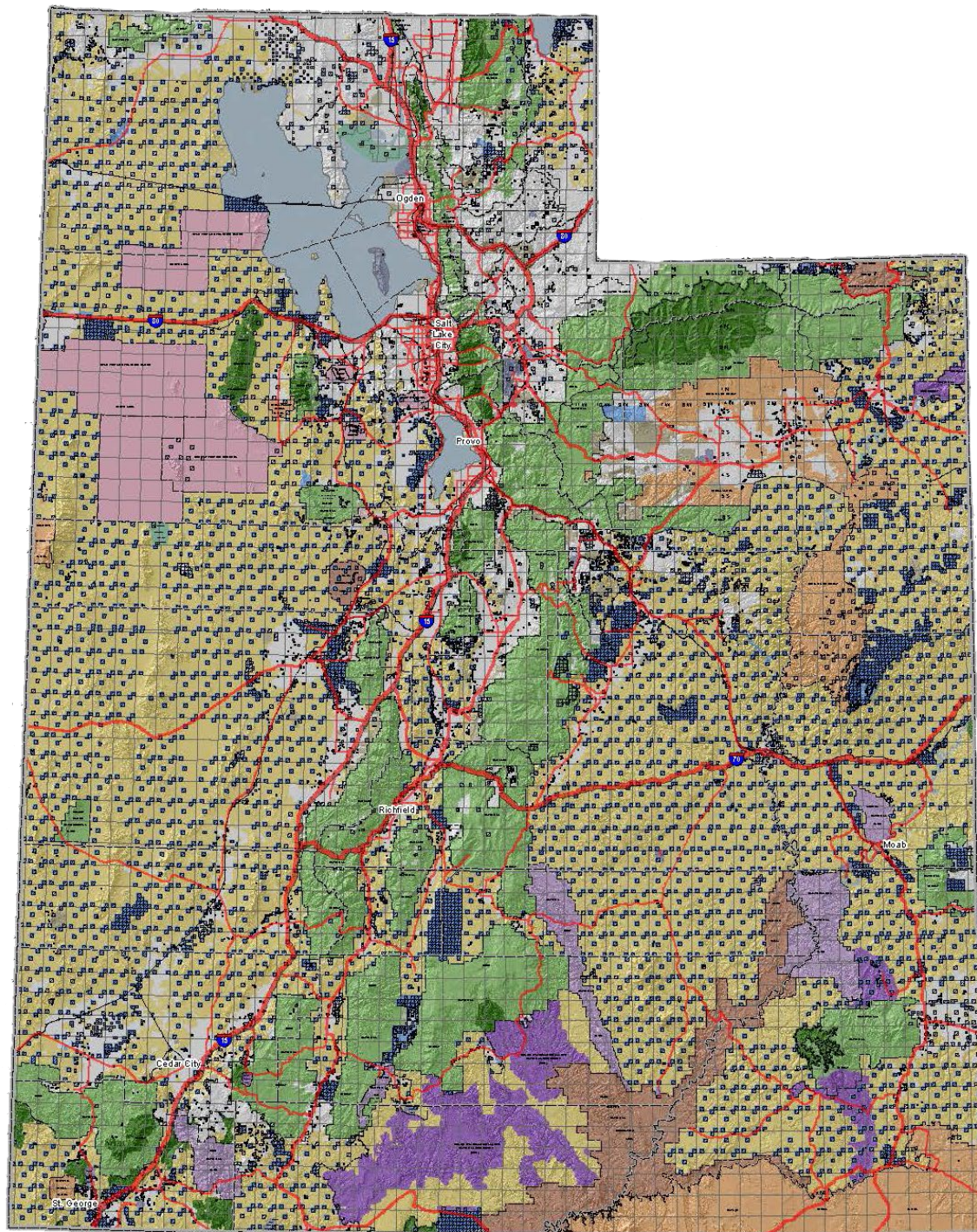


# How Did Utah Get School Trust Lands?



- At statehood congress entrusted sections 2, 16, 32, and 36 of each township to the State.
  - To provide support to common schools.
  - Federal Exchange Program
  - The Lands are not public lands.
-







# Other Institutions that are Beneficiaries of Trust Lands

- Utah School for the Deaf
- Utah School for the Blind
- State Teaching Colleges
- Utah State University
- University of Utah
- State Reservoirs
- Utah State Hospital
- Miners Hospital
- Juvenile Justice Services
- College of Mines
- Public buildings



# Public Schools are the Primary Beneficiaries of Trust Lands



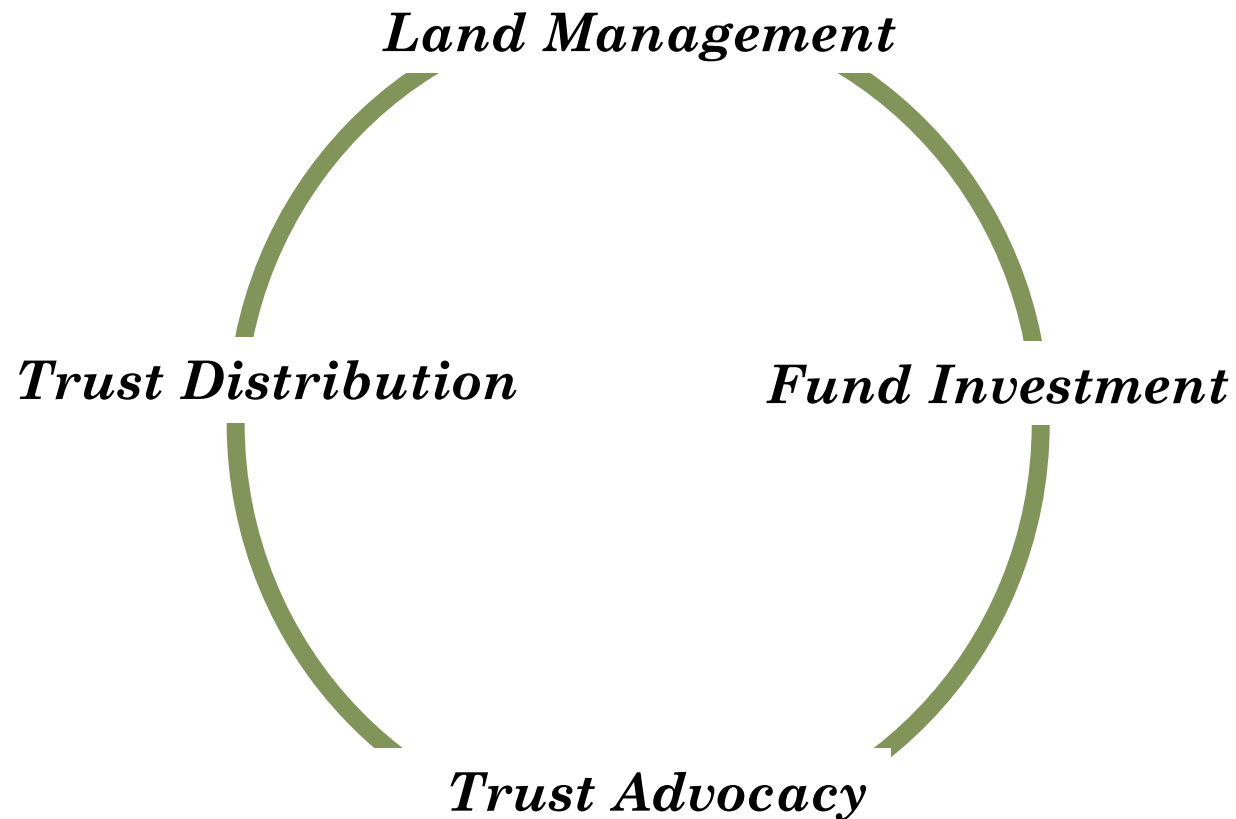
**Designee of 96% of  
Trust Lands**

**\$2.5 Billion  
Permanent Fund**

---

**3.3 Million-acre  
Trust Land Portfolio**

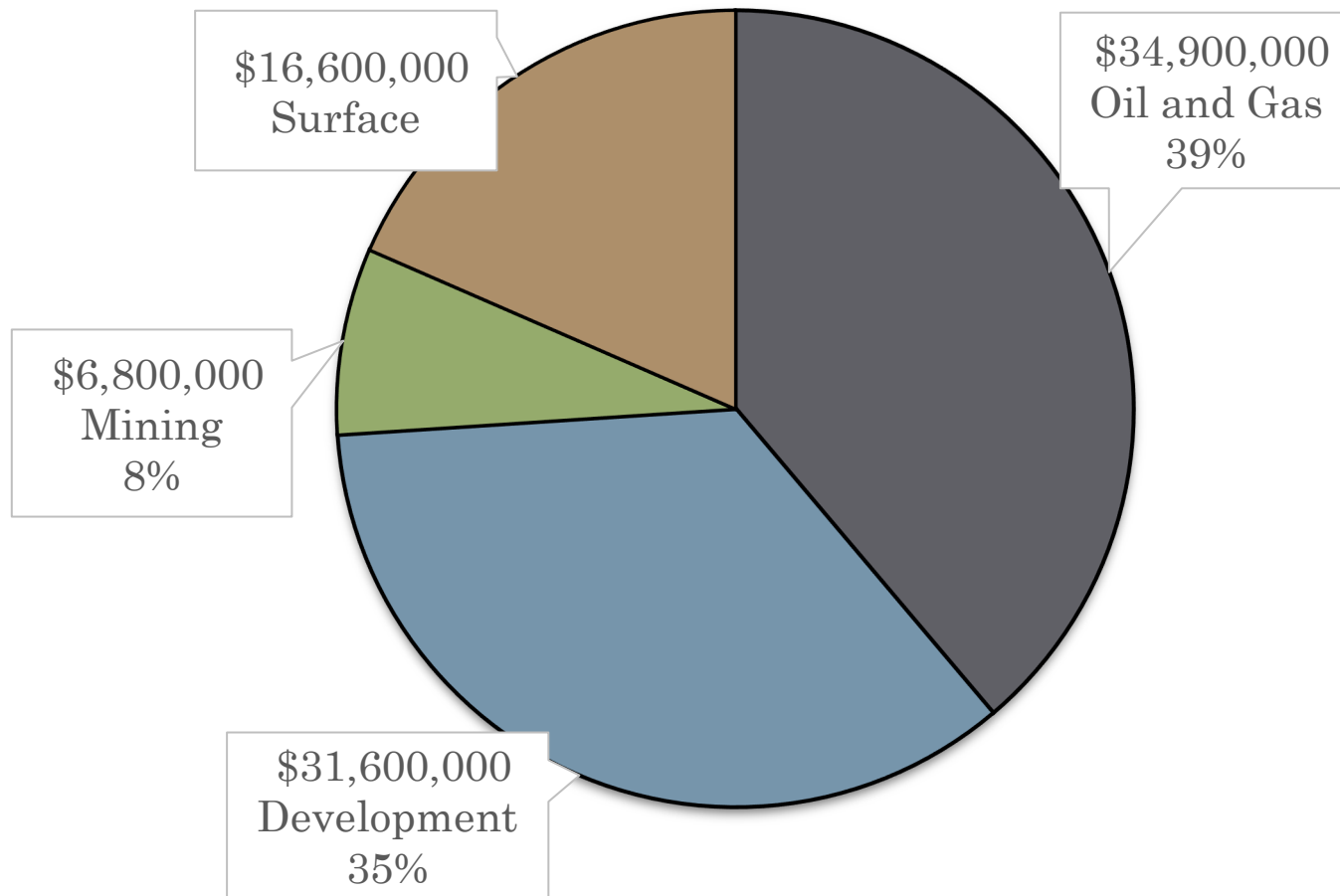
# Who Manages the State Trust Lands System?



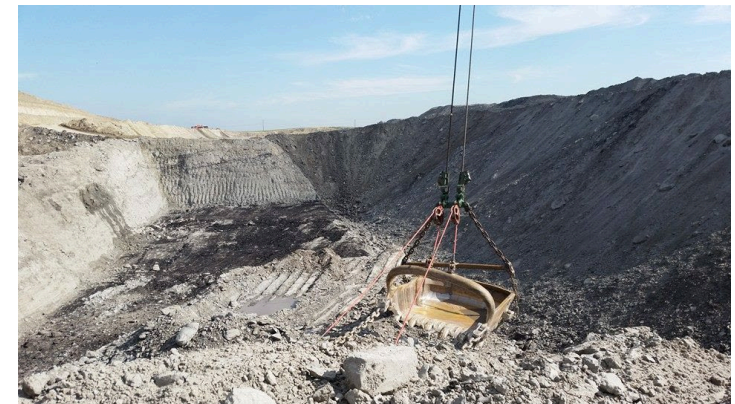
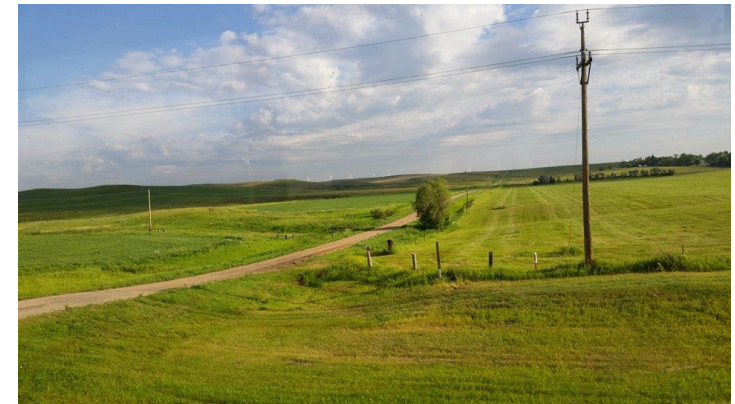
- School and Institutional Trust Lands Administration (SITLA)
  - School and Institutional Trust Funds Office (SITFO)
  - Lands Trust Protection and Advocacy Office
  - School LAND Trust Program
-

# Trust Lands Generate Money:

## Trust Land Revenue by Business Group



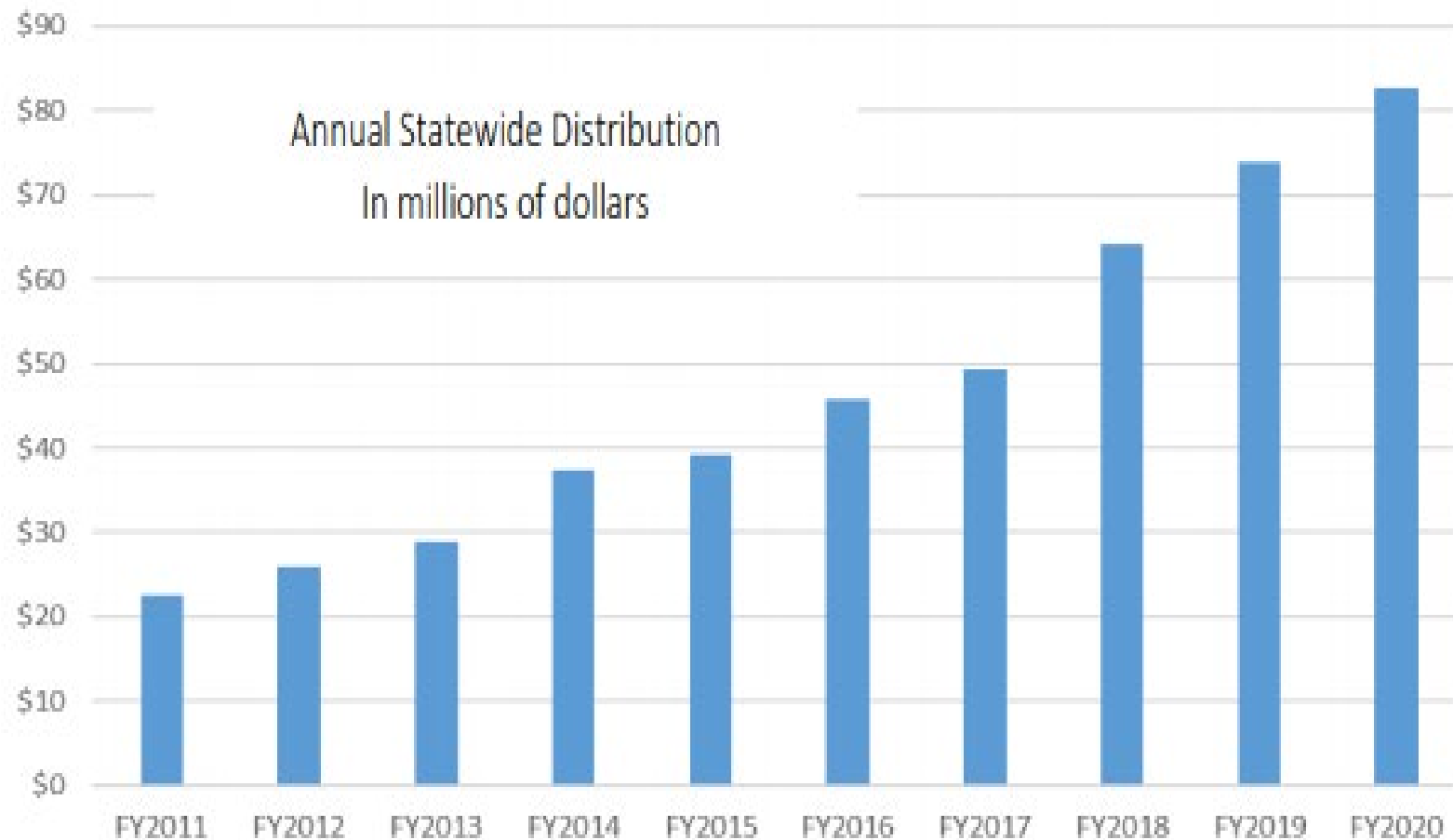
Fiscal Year 2019





# How Does the Fund Improve Public Education?

An increasing non-tax revenue stream



**This Year  
2019-2020 School Year  
Distributions:**

**\$82.7 Million**

**Average Per School**

Elementary: \$68,000

Middle: \$106,000

High School: \$138,000

**2011 -2019 SCHOOL YEAR DISTRIBUTIONS**

# Increasing Parent Involvement Through School Community Councils



- SCC Determine the best use of funds
- Decision making at the most local level
- Direct impact on greatest academic needs
- Parent majority councils
- Plans are reviewed at the end of the year
- PTAs are encouraged to coordinate work with their SCC



# Classroom Impacts

## School LAND Trust Plans are Making a Difference

2018-2019



### Reading Elementary

- Math and Science
  - Supports Engineering curriculum and engineering specialist
- 



### Corner Canyon High School

- English, Math and Science
  - Supports of STEM education, like robotics
- 



### Edison Elementary

- Reading
  - Supports systematic phonics program and exceptional tutors
-



# School LAND Trust Plans are Making a Difference

2018-2019



Tooele High School

- Literacy
  - Supports a reading specialist and instructional coach
- 



Layton Elementary

- Science
  - Supported STEAM curriculum, teacher stipends and STEAM club supplies
-



## *Making Connections*

“ We all understand that the real power of PTA is in the army of parents that exist in every legislative district and every congressional district who are willing to be the eyes and ears of the community and speak up and be a voice for children. The trust was created to ensure an educated citizenry and an effective democracy. ”

-Paula Plant School LAND Trust Program Director

Every Child. One Voice

# What Can You Do?

- **Be elected to your School Community Council**
  - Be the liaison between the council and PTA
  - Share legislative updates; inform those you work with
  - Ask questions. Be involved. Ensure good decisions.
- **Introduce Yourself to your representatives**
  - When the PTA issues a request, take action
  - Make phone calls, and send emails to policy makers
- **Educate your community about the importance of the trust**
  - Be a regular contributor to the school eNewsletter
  - Write a local newspaper article about how funds are helping your children
- **Stay Connected to the Trust System**
  - Land Trusts Protection & Advocacy Office  
Justin Atwater, Director  
801-359-4379  
[justinatwater@utah.gov](mailto:justinatwater@utah.gov)
  - School Children's Trust Program  
Paula Plant, Director  
801-538-7555  
[paula.plant@schools.utah.gov](mailto:paula.plant@schools.utah.gov)